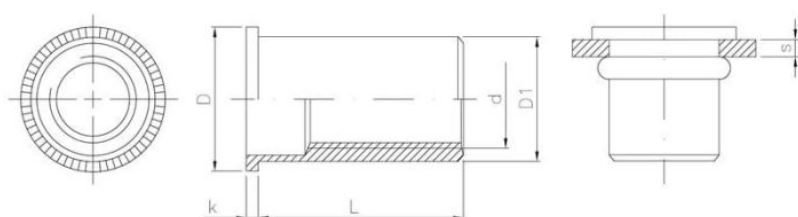


25.21
NKPA

Nitonakrętka otwarta aluminiowa z kołnierzem płaskim



Wymiary

Material index	d - Średnica [mm]	L - Długość [mm]	D [mm]	k [mm]	D1 [mm]	s [mm]
2521040095ALT	M4	9.5	9.0	1.0	5.9	0.5-2.0
2521100175ALT	M10	17.5	16.3	1.6	12.9	1.0-4.0
2521080150ALT	M8	15.0	14.5	1.5	10.9	1.0-3.5
2521060140ALT	M6	14.0	12.5	1.5	8.9	0.5-3.0
2521050120ALT	M5	12.0	10.0	1.0	6.9	0.5-2.5

ZAPYTAJ O PRODUKT

+48 58 55 40 555

KUP W SKLEPIE MARCOPOL24