

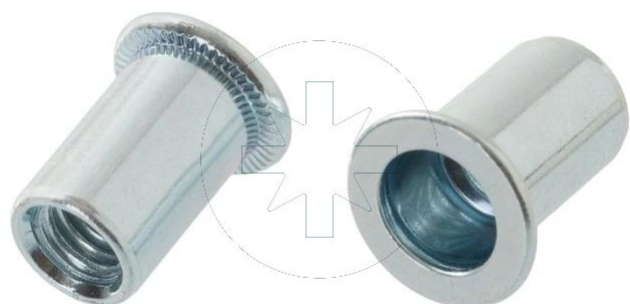
25.01
NKP

Nitonakrętka otwarta stalowa z kołnierzem płaskim

ZAPYTAJ O PRODUKT

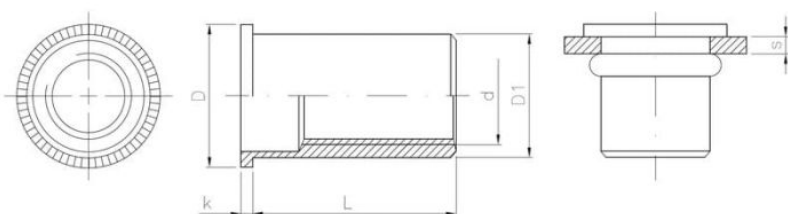
+48 58 55 40 555

KUP W SKLEPIE MARCOPOL24



Pokrycie:

B
POWŁOKA
CYNKOWA
BIAŁA



Wymiary

| Material index | d - Średnica [mm] | L - Długość [mm] | D [mm] | k [mm] | D1 [mm] | s [mm] |
|----------------|-------------------|------------------|--------|--------|---------|---------|
| 2501040100STT | M4 | 10.0 | 8.5 | 0.8 | 5.9 | 0.5-2.0 |
| 2501050120STT | M5 | 12.0 | 10.0 | 1.0 | 6.9 | 0.5-2.5 |
| 2501050160STT | M5 | 16.0 | 10.0 | 1.0 | 6.9 | 2.5-5.0 |
| 2501060140STT | M6 | 14.0 | 12.3 | 1.3 | 8.9 | 0.5-3.0 |
| 2501060165STT | M6 | 16.5 | 12.3 | 1.3 | 8.9 | 3.0-5.5 |
| 2501080160STT | M8 | 16.0 | 15.0 | 1.5 | 10.9 | 0.5-3.5 |
| 2501080195STT | M8 | 19.5 | 15.0 | 1.5 | 10.9 | 3.5-6.0 |
| 2501100155STT | M10 | 15.5 | 16.3 | 1.6 | 12.9 | 0.5-2.5 |
| 2501100175STT | M10 | 17.5 | 16.0 | 1.6 | 12.9 | 1.0-3.5 |
| 2501100195STT | M10 | 19.5 | 17.0 | 1.6 | 12.9 | 2.5-4.0 |
| 2501100225STT | M10 | 22.5 | 17.0 | 1.6 | 12.9 | 4.0-6.0 |
| 2501120200STT | M12 | 20.0 | 18.0 | 1.7 | 14.9 | 1.0-4.0 |
| 2501120230STT | M12 | 23.0 | 18.0 | 1.7 | 14.9 | 4.0-6.5 |