

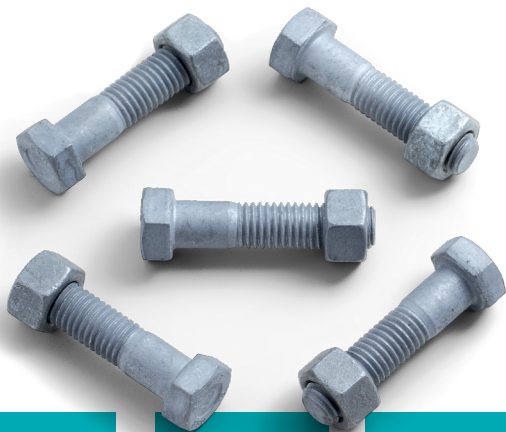


marka która łączy



marka która łączy

**SAFETY  
GUARANTEE**



## SB BOLT KIT

FOR NON-PRELOADED BOLT JOINTS

CERTIFIED FOR CONFORMITY WITH THE HARMONIZED STANDARD  
**PN-EN 15048-1**



**EXPERIENCE**

We have been operating in the fastener market for 34 years



**SAFETY**

Proven quality guaranteed by technical evaluations, certificates and approvals



**TECHNICAL SUPPORT**

We assist our customers at every stage of a project

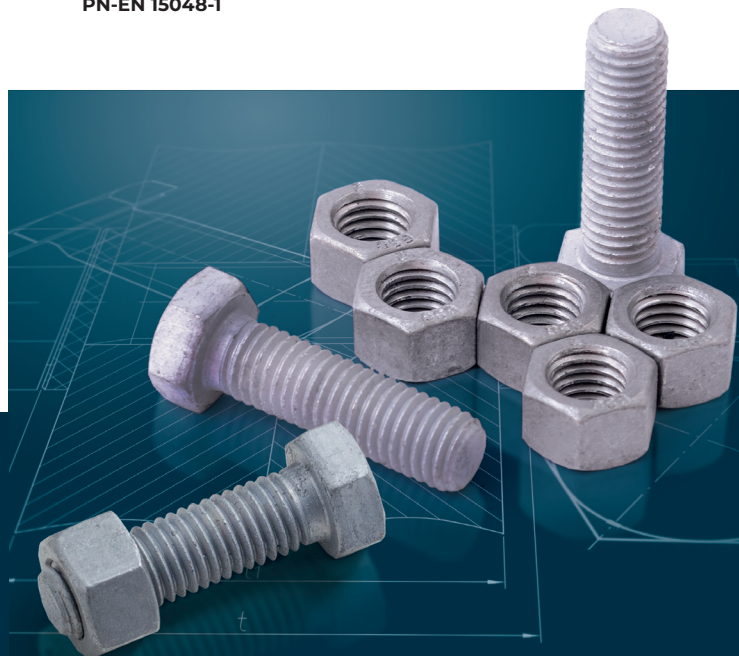


**Delivery within:  
24h\*/48h**

\*for orders placed by 14.00 on the previous day

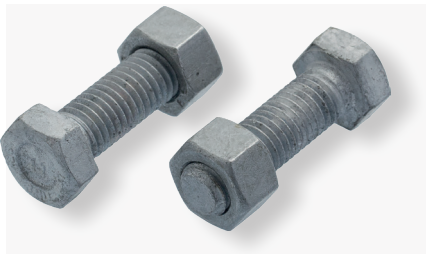
**MARCOPOL Sp. z o.o.**  
Manufacturer of screws  
ul. Oliwska 100  
80-209 Chwaszczyno  
near Gdynia  
tel.: + 48 58 55 40 555

**Customer Service:**  
tel.: + 48 58 55 40 655  
fax: + 48 58 55 40 439  
bok@marcopol.pl  
www.marcopol.pl



**SB MARCOPOL BOLT KITS  
- HIGH SAFETY STANDARDS**

## BOLT KIT FOR NON-PRELOADED JOINTS FULL THREAD



Code and size	Index	Packaging [set]
SB M12 x 30	631092	100
SB M12 x 35	631093	100
SB M12 x 40	631094	100
SB M12 x 45	631095	100
SB M12 x 50	631096	100
SB M12 x 55	631097	100
SB M12 x 60	631098	100
SB M12 x 65	631099	50
SB M16 x 35	648674	50
SB M16 x 40	631100	50
SB M16 x 45	631101	50
SB M16 x 50	631102	50
SB M16 x 55	631103	50
SB M16 x 60	631104	50
SB M16 x 65	631105	25
SB M16 x 70	631106	25
SB M20 x 45	641211	25
SB M20 x 50	631107	25
SB M20 x 55	631108	25
SB M20 x 60	631109	25
SB M20 x 65	631110	25
SB M20 x 70	631111	25
SB M24 x 55	648665	10
SB M24 x 60	648666	10
SB M24 x 70	648667	10

\* Possibility to order sizes not in the catalogue - ask your consultant for details.

- SB bolt kits are intended, in particular, for connections of steel construction elements in the form of butt joints and lap joints, designed on the basis of the Eurocode.
- SB bolts, in accordance with PN-EN 15048-1, should be delivered only in kits and original packaging.
- Delivery batches are subject to ongoing inspection tests for the tensile strength of the bolt-nut kit.

## BOLT KIT FOR NON-PRELOADED JOINTS PARTIAL THREAD



Code and size	Index	Packaging [set]
SB M12 x 40	631112	100
SB M12 x 45	631113	100
SB M12 x 50	631114	100
SB M12 x 55	631115	100
SB M12 x 60	631116	100
SB M12 x 65	631117	50
SB M12 x 70	631118	50
SB M12 x 80	631119	50
SB M12 x 90	631120	50
SB M12 x 100	631121	50
SB M12 x 120	648677	50
SB M12 x 130	648678	50
SB M12 x 140	648675	50
SB M12 x 150	648676	50
SB M12 x 160	648671	50
SB M12 x 180	648672	50
SB M12 x 200	648673	50
SB M16 x 45	631122	50
SB M16 x 50	631123	50
SB M16 x 55	631124	50
SB M16 x 60	631125	50
SB M16 x 65	631126	25
SB M16 x 70	631127	25
SB M16 x 80	631128	25
SB M16 x 85	637656	25
SB M16 x 90	631129	25
SB M16 x 95	637657	25
SB M16 x 100	631130	25
SB M20 x 60	631131	25
SB M20 x 65	631132	25
SB M20 x 70	631133	25
SB M20 x 80	631134	25
SB M20 x 90	631135	25
SB M20 x 100	631136	25
SB M24 x 70	96224	10
SB M24 x 80	631137	10
SB M24 x 90	631138	10
SB M24 x 95	637664	10
SB M24 x 100	631139	10
SB M24 x 120	648668	10
SB M30 x 120	648661	5
SB M30 x 130	648662	5

\* Possibility to order sizes not in the catalogue - ask your consultant for details.